

# REFERENCE MANUAL FOR INTERVENTION IN DISADVANTAGED AREAS: *ONE SCHOOL, SUCCESS FOR ALL*

## Aims:

- To provide support for reflection by education system stakeholders
- To provide guidance in selecting actions to be prioritized

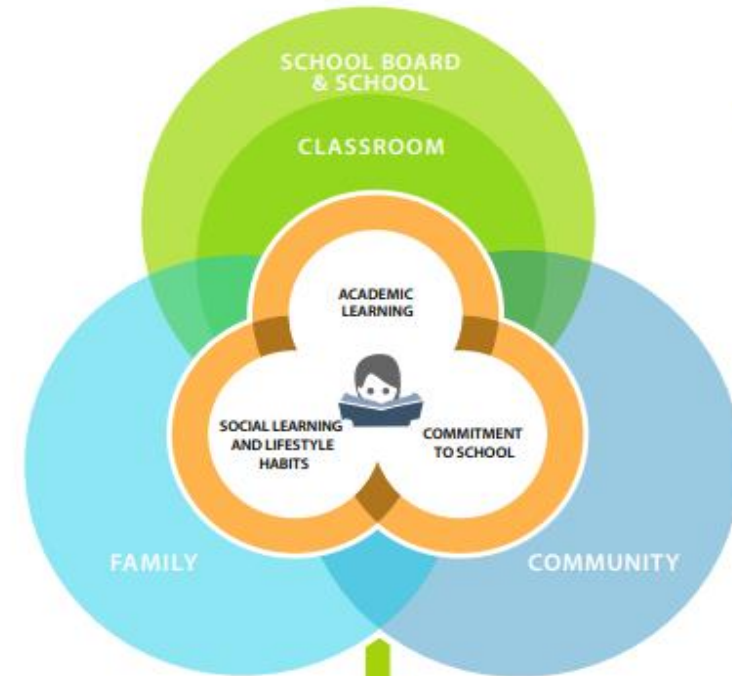
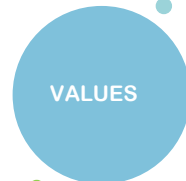
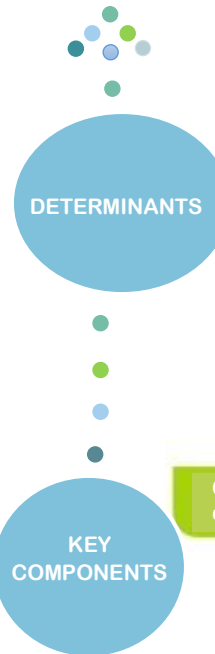
Students live in various environments (school, family, community) that have a determining influence on their perseverance in school and their educational success. There are determinants associated with the school as well, and school stakeholders can work with these to foster student success. Although working with families and the community can be difficult at times, all parties gain when they support one another because the connections they forge enable them to cast a safety net around the students.

The more a given action involves these key components, the greater the potential for student success will be.

All students can succeed if their characteristics and needs are taken into account. When we believe this, we show our confidence in the education system's capacity to achieve its aims.

The interventions we make and the practices we adopt to reduce inequality are rooted in these values.

A school whose students are welcomed by stakeholders whose collaboration and practices, implemented together with its partners, have a positive impact and give all students equal opportunities to succeed.



EQUALITY

FAIRNESS

SOCIAL JUSTICE