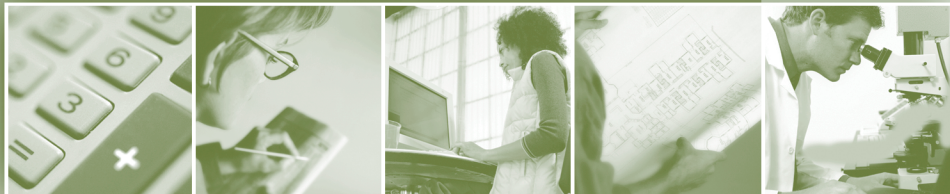


RELANCE SURVEY OF VOCATIONAL TRAINING AT THE SECONDARY LEVEL-2009



EMPLOYMENT SITUATION OF GRADUATES

2007, 2008 and 2009 Surveys



Survey conducted by the Direction de la recherche, des statistiques et de l'information (DRSI),

Supervision

Diane Charest
Kouadio Antoine N'Zué

Coordination and text

François Girard

Data collection

Le Bureau des intervieweurs professionnels inc. (BIP)

Computer Processing

Geneviève Aylwin
Eve-Marie Castonguay
Lucie Gagnon
Robert Paré
Audrey Sanschagrin
Pierre Simard
Christian Tremblay

Gouvernement du Québec
Ministère de l'Éducation, du Loisir et du Sport, 09-00995

ISBN 978-2-550-57859-8 (print)

ISBN 978-2-550-57860-4 (PDF)

ISSN 1718-3979 (print version)

ISSN 1718-3987 (on-line version)

Legal Deposit - Bibliothèque et Archives nationales du Québec, 2010

Legal Deposit - Bibliothèque et Archives Canada, 2010

Production

Direction des communications

Contributors

Direction de l'aide financière aux études
Direction des ressources matérielles
Secteur de la formation professionnelle et technique
et de la formation continue
Équipe du soutien informatique (DRSI)

English version

Direction de la production en langue anglaise
Secteur des services à la communauté anglophone

TABLE OF CONTENTS

Introduction	IV
Highlights	1
Glossary of the Main Terms Used in the Tables	2
How Indicators Are Calculated	4
Overall Results	5
Results by Training Sector and Program	6
Administration, commerce and computer technology ...	6
Agriculture and fisheries	7
Food services and tourism	9
Arts	10
Woodworking and furniture making	11
Chemistry and biology	12
Buildings and public works	12
Land use planning and the environment	15
Electrotechnology	15
Motorized equipment maintenance	16
Mechanical manufacturing	17
Forestry and pulp and paper	19
Communications and documentation	20
Maintenance mechanics	21
Mining and site operations	21
Metallurgical technology	22
Transportation	23
Fashion, leather and textiles	24
Health services	24
Beauty care	25
Notes	27

INTRODUCTION

The data presented here are based on the results of the provincewide *Relance Survey of Vocational Training at the Secondary Level*, conducted annually by the Ministère de l'Éducation, du Loisir et du Sport (MELS). The survey carried out in 2009 concerns the graduating class of 2007-2008. The surveys carried out in 2008 and 2007 concerned the graduating classes of 2006-2007 and 2005-2006, respectively.

The purpose of this survey is to provide an accurate picture of the situation of graduates from secondary-level vocational training programs approximately nine months after they have earned a diploma. It meets a need for accurate, relevant information on how well recent graduates are faring on the labour market, just as the other two *Relance* surveys do in the case of college and university graduates.

For further information on the programs covered in this brochure or on related matters, please refer to the other *Relance* survey documents available on the Ministère's Web site at <http://www.mels.gouv.qc.ca/Relance>.

HIGHLIGHTS

The **highlights** from the 2009 survey (describing the situation as of March 31, 2009):

- On March 31, 2009, approximately nine months after obtaining a diploma, 73.5 % of graduates holding a Diploma of Vocational Studies (DVS) and 68.7 % of graduates holding an Attestation of Vocational Specialization (AVS) were employed. In 2008 and 2007, the employment rates were, respectively, 77.8 % and 78.3 % for DVS graduates and 73.0 % and 75.1 % for AVS graduates.
- The unemployment rate for DVS graduates jumped 3.2 percentage points, going from 9.6 % in 2008 to 12.8 % in 2009. For AVS graduates, the unemployment rate for 2009 was 10.9 %, compared with 9.4 % in 2008.
- Among graduates who were employed, 87.9 % and 84.7 % were working full-time (30 or more hours per week) after obtaining a DVS or an AVS, respectively. The rate for DVS graduates has fluctuated little and, over the years, has remained above 85.0 %.
- The proportion of DVS graduates who were working full-time was 94.0 % for men compared with 79.7 % for women. As for AVS graduates, the proportion stood at 92.1 % for men and 77.7 % for women.
- Among DVS graduates who were working full-time, 80.3 % reported that their job was related to their training, versus 68.3 % of AVS graduates.
- The average gross weekly salary of DVS working full-time is increasing. It stood at \$635 in 2009, showing an increase of 3.9 % from that earned in 2008. AVS graduates saw a 5.2 % hike in their average gross weekly salary, which went from \$633 in 2008 to \$666 in 2009.

GLOSSARY OF THE MAIN TERMS USED IN THE TABLES

TARGET GRADUATES

“Target graduates” refers to all holders of a Diploma of Vocational Studies (DVS) or an Attestation of Vocational Specialization (AVS) who graduated during the academic year preceding the survey year.

EMPLOYED

“Employed” refers to target graduates who stated they were self-employed or working for an employer, and not studying full-time.

SEEKING EMPLOYMENT

“Seeking employment” refers to target graduates who stated they were actively looking for a job and were neither studying nor working.

STUDYING

“Studying” refers to target graduates who stated they were either studying full-time or part-time, and not working.

INACTIVE

“Inactive” refers to target graduates who stated they were not employed, were not seeking employment, and were not studying.

UNEMPLOYMENT RATE (UNEMPLOYED)

“Unemployment rate (unemployed)” refers to the number of graduates seeking employment compared with the number of people in the labour force (which includes people who are employed and people who are seeking employment).

WORKING FULL-TIME

“Working full-time” refers to graduates working full-time, i.e. generally 30 hours or more per week.

WORKING PART-TIME

“Working part-time” refers to graduates working part-time, i.e. generally less than 30 hours per week. The proportion of graduates working part-time is obtained by subtracting the proportion of graduates working full-time from 100%.

AVERAGE GROSS WEEKLY SALARY

“Average gross weekly salary” represents the average gross income earned by workers for one week of full-time work. The data reflect only graduates working for an employer.

WORKING IN RELATED FIELD

“Working in related field” refers to graduates working full-time who consider their job to be connected to their field of study.

HOW INDICATORS ARE CALCULATED

The calculation table below uses data from the 2009 *Relance Survey of Vocational Training at the Secondary Level* to illustrate the application of the definitions of the main terms used in the tables.

Calculation example: Results of the 2009 survey of graduates with a DVS

	Number	%	Calculation
Number of graduates targeted by the survey (size of the population)	31 697		
Total number of graduates who completed the questionnaire	19 093	100.0	
Employed	14 037	73.5	$14\,037 / 19\,093$
• full-time	12 336	87.9	$12\,336 / 14\,037$
- in related field	9 904	80.3	$9\,904 / 12\,336$
Seeking employment	2 052	10.7	$2\,052 / 19\,093$
Studying	2 136	11.2	$2\,136 / 19\,093$
Inactive	868	4.5	$868 / 19\,093$
Unemployment rate		12.8	$2\,052 / (14\,037 + 2\,052)$

OVERALL RESULTS

Employment situation of graduates with Diploma of Vocational Studies or an Attestation of Vocational Specialization on March 31 of the survey year

<div style="display: flex; flex-direction: column; gap: 5px;"> <div style="display: flex; align-items: center;"> SITUATION IN 2009</div> <div style="display: flex; align-items: center;"> SITUATION IN 2008</div> <div style="display: flex; align-items: center;"> SITUATION IN 2007</div> </div>	SITUATION ON MARCH 31					FULL-TIME EMPLOYMENT AND CHARACTERISTICS			
	TARGET GRADUATES	EMPLOYED	SEEKING EMPLOYMENT	STUDYING	INACTIVE	UNEMPLOYMENT RATE	WORKING FULL-TIME	AVERAGE GROSS WEEKLY SALARY	WORKING IN RELATED FIELD
	N	(%)	(%)	(%)	(%)	(%)	(%)	(\$)	(%)

ATTESTATION OF VOCATIONAL SPECIALIZATION (AVS)

WOMEN	3 154	65.2	8.8	15.9	10.1	11.9	77.7	570	65.1
	2 854	69.2	8.0	13.2	9.6	10.4	79.8	538	66.1
	2 786	72.6	7.9	11.1	8.4	9.8	78.2	529	67.9
MEN	2 673	72.8	7.9	13.7	5.6	9.8	92.1	740	71.2
	2 459	77.3	7.0	10.9	4.8	8.3	93.2	711	70.2
	2 172	78.4	6.0	10.7	5.0	7.1	92.4	682	74.4
TOTAL	5 827	68.7	8.4	14.8	8.0	10.9	84.7	666	68.3
	5 313	73.0	7.6	12.1	7.3	9.4	86.5	633	68.3
	4 958	75.1	7.1	10.9	6.9	8.6	84.7	605	71.1

DIPLOMA OF VOCATIONAL STUDIES (DVS)

WOMEN	13 326	76.1	7.6	10.2	6.1	9.1	79.7	530	81.3
	13 446	78.9	6.7	8.4	6.0	7.8	80.9	515	81.4
	13 413	79.3	6.9	8.4	5.4	8.0	79.3	490	79.0
MEN	18 371	71.7	12.9	11.9	3.5	15.3	94.0	696	79.6
	18 088	77.0	9.4	10.4	3.1	10.9	94.4	669	78.2
	17 523	77.6	9.5	9.8	3.2	10.9	94.3	647	79.0
TOTAL	31 697	73.5	10.7	11.2	4.5	12.8	87.9	635	80.3
	31 534	77.8	8.3	9.6	4.3	9.6	88.6	611	79.5
	30 936	78.3	8.4	9.2	4.1	9.7	87.8	587	79.0

RESULTS BY TRAINING SECTOR AND PROGRAM

Employment situation of graduates with Diploma of Vocational Studies or an Attestation of Vocational Specialization on March 31 of the survey year

		SITUATION ON MARCH 31					FULL-TIME EMPLOYMENT AND CHARACTERISTICS			
		TARGET GRADUATES	EMPLOYED	SEEKING EMPLOYMENT	STUDYING	INACTIVE	UNEMPLOYMENT RATE	WORKING FULL-TIME	AVERAGE GROSS WEEKLY SALARY	WORKING IN RELATED FIELD
			N	(%)	(%)	(%)	(%)	(%)	(%)	(\$)
ADMINISTRATION, COMMERCE AND COMPUTER TECHNOLOGY		8 736	70.2	9.1	13.5	7.2	11.5	85.3	584	70.7
		8 233	74.1	8.2	10.9	6.7	10.0	87.0	561	71.8
		7 639	75.0	8.7	10.0	6.4	10.4	84.8	544	72.0
5212	Secretarial Studies	1 353	82.3	6.5	6.3	4.9	7.4	85.5	543	83.8
		1 337	84.3	6.4	4.6	4.7	7.0	88.7	525	85.0
		1 250	81.9	7.3	6.1	4.7	8.2	86.8	505	83.6
5226	Secretarial Studies - Legal	50	96.0	4.0	0.0	0.0	4.0	100.0	520	79.2
		61	82.9	0.0	17.1	0.0	0.0	94.1	576	81.3
		82	89.4	6.4	4.3	0.0	6.7	92.9	519	87.2
5227	Secretarial Studies - Medical	215	86.8	3.7	5.1	4.4	4.1	85.6	563	80.2
		266	87.9	5.0	2.5	4.5	5.4	85.7	556	79.3
		349	88.3	5.3	3.4	3.0	5.6	86.8	549	78.8
5229	Computing Support	372	66.8	12.6	15.4	5.1	15.9	93.7	571	81.3
		308	70.7	9.3	18.6	1.4	11.6	90.8	521	77.5
		347	75.2	9.2	13.4	2.1	10.9	89.4	504	70.0
5231	Accounting	1 279	73.8	12.4	8.8	4.9	14.4	87.3	511	71.8
		1 319	79.5	8.0	7.2	5.4	9.1	86.5	494	74.1
		1 315	75.8	11.1	7.0	6.0	12.8	84.6	482	72.7
5264	Starting a Business	3 279	61.9	8.9	18.3	10.9	12.5	80.7	697	n.a.
		2 935	66.6	8.8	14.3	10.3	11.7	83.8	681	n.a.
		2 571	69.2	8.2	11.9	10.8	10.6	81.3	664	n.a.
5309	Construction Business Management	181	77.1	6.7	9.5	6.7	8.0	95.1	957	79.2
		112	89.6	3.0	3.0	4.5	3.2	96.7	926	75.9
		103	81.5	6.2	7.7	4.6	7.0	92.5	911	73.5
5321	Professional Sales	568	77.1	8.2	11.9	2.7	9.6	86.2	556	74.3
		580	76.6	8.3	11.3	3.9	9.7	89.9	563	75.6
		456	82.1	5.3	10.3	2.3	6.1	85.8	547	79.7

SITUATION IN 2009
 SITUATION IN 2008
 SITUATION IN 2007

5323	Sales Representation	457	83.6	6.7	5.6	4.1	7.4	88.4	578	72.9
		314	84.7	6.4	5.9	3.0	7.0	84.3	565	80.7
5712	Secretarial Studies*	131	67.6	19.7	8.5	4.2	22.6	93.8	507	64.4
		159	75.3	17.6	7.1	0.0	19.0	89.1	564	75.4
5727	Secretarial Studies - Medical*	13	87.5	12.5	0.0	0.0	12.5	100.0	506	57.1
		27	81.3	0.0	18.8	0.0	0.0	92.3	527	75.0
		10	85.7	0.0	14.3	0.0	0.0	100.0	525	66.7
5729	Computing Support*	21	66.7	13.3	6.7	13.3	16.7	100.0	599	80.0
		30	81.3	12.5	6.3	0.0	13.3	92.3	627	66.7
		36	63.6	22.7	13.6	0.0	26.3	85.7	562	83.3
5731	Accounting*									
		440	55.1	15.4	20.1	9.4	21.8	89.9	510	67.2
		391	64.2	12.7	15.7	7.4	16.6	87.8	501	68.7
5764	Starting a Business*									
		223	39.7	13.8	44.0	2.6	25.8	78.3	608	n.a.
5821	Professional Sales*	64	59.5	8.1	27.0	5.4	12.0	86.4	673	68.4
		47	75.0	4.2	16.7	4.2	5.3	83.3	668	80.0
		30	82.4	0.0	11.8	5.9	0.0	78.6	495	72.7
AGRICULTURE AND FISHERIES*		770	59.2	11.4	16.1	13.3	16.2	84.1	514	82.7
		727	65.0	8.0	12.7	14.2	11.0	86.2	520	77.7
		800	66.3	8.7	14.1	11.0	11.6	86.7	499	77.2
5043	Horticultural Specialties	9	42.9	14.3	14.3	28.6	25.0	66.7	x	100.0
		8	42.9	14.3	28.6	14.3	25.0	100.0	428	100.0
		20	33.3	26.7	0.0	40.0	44.4	80.0	755	50.0
5079	Arboriculture-Pruning	64	64.9	13.5	10.8	10.8	17.2	79.2	629	84.2
		48	61.8	8.8	5.9	23.5	12.5	100.0	684	71.4
		56	80.0	14.3	2.9	2.9	15.2	89.3	639	96.0
5167	Dairy Production	169	68.1	2.5	21.8	7.6	3.6	92.6	512	89.3
		144	77.1	3.7	15.6	3.7	4.5	95.2	462	88.8
		140	68.9	5.7	22.6	2.8	7.6	97.3	469	85.9
5168	Beef Production	39	59.3	14.8	22.2	3.7	20.0	100.0	580	93.8
		24	68.2	4.5	13.6	13.6	6.3	93.3	539	85.7
		35	70.4	18.5	11.1	0.0	20.8	89.5	449	70.6

Employment situation of graduates with Diploma of Vocational Studies or an Attestation of Vocational Specialization on March 31 of the survey year

	TARGET GRADUATES	SITUATION ON MARCH 31					FULL-TIME EMPLOYMENT AND CHARACTERISTICS			
		EMPLOYED	SEEKING EMPLOYMENT	STUDYING	INACTIVE	UNEMPLOYMENT RATE	WORKING FULL-TIME	AVERAGE GROSS WEEKLY SALARY	WORKING IN RELATED FIELD	
		N	(%)	(%)	(%)	(%)	(%)	(%)	(\$)	(%)
AGRICULTURE AND FISHERIES* (cont.)	770	59.2	11.4	16.1	13.3	16.2	84.1	514	82.7	
	727	65.0	8.0	12.7	14.2	11.0	86.2	520	77.7	
	800	66.3	8.7	14.1	11.0	11.6	86.7	499	77.2	
5171 Hog Production	10	87.5	0.0	12.5	0.0	0.0	100.0	480	85.7	
	21	92.3	0.0	0.0	7.7	0.0	100.0	577	91.7	
	23	94.1	0.0	0.0	5.9	0.0	93.8	465	80.0	
5173 Floristry	107	60.0	17.3	13.3	9.3	22.4	62.2	361	64.3	
	92	81.0	3.4	3.4	12.1	4.1	66.0	416	67.7	
	121	74.0	7.8	9.1	9.1	9.5	64.9	384	67.6	
5210 Horticultural Production	48	43.3	6.7	26.7	23.3	13.3	84.6	559	81.8	
	50	51.6	6.5	25.8	16.1	11.1	81.3	386	69.2	
	66	62.5	2.5	17.5	17.5	3.8	92.0	375	69.6	
5254 Field Crops	15	50.0	10.0	10.0	30.0	16.7	100.0	500	100.0	
	15	92.3	0.0	7.7	0.0	0.0	100.0	582	75.0	
	19	68.8	0.0	31.3	0.0	0.0	90.9	522	70.0	
5256 Maple Syrup Production	17	83.3	16.7	0.0	0.0	16.7	90.0	611	88.9	
	17	73.3	13.3	0.0	13.3	15.4	90.9	644	90.0	
	15	100.0	0.0	0.0	0.0	0.0	92.9	625	92.3	
5257 Professional Fishing	14	54.5	27.3	9.1	9.1	33.3	100.0	988	66.7	
	22	31.6	26.3	10.5	31.6	45.5	100.0	877	83.3	
	22	26.7	6.7	6.7	60.0	20.0	100.0	900	100.0	
5288 Ornamental Horticulture	137	54.3	9.9	14.8	21.0	15.4	84.1	438	81.1	
	157	57.0	11.6	11.6	19.8	16.9	73.9	474	76.5	
	182	58.9	10.9	12.4	17.8	15.6	86.8	455	74.2	
5320 Landscaping Operations	133	51.3	16.7	12.8	19.2	24.5	80.0	527	78.1	
	124	56.5	9.8	18.5	15.2	14.8	90.4	546	61.7	
	95	62.0	9.9	21.1	7.0	13.7	84.1	551	64.9	
5571 Landscaping Operations*										
	6	75.0	0.0	25.0	0.0	0.0	100.0	826	100.0	

FOOD SERVICES AND TOURISM	2 510	70.4	7.3	18.4	4.0	9.4	83.1	509	80.1
	2 388	72.4	6.2	16.3	5.1	7.9	83.7	489	78.3
	2 384	76.0	4.8	14.6	4.6	6.0	85.1	468	77.8
1057 Restaurant Pastry Making	28	89.5	0.0	10.5	0.0	0.0	94.1	551	87.5
	52	64.9	18.9	8.1	8.1	22.6	83.3	559	80.0
	28	81.0	0.0	14.3	4.8	0.0	88.2	662	100.0
1538 Professional Cooking*									
	127	68.8	11.3	17.5	2.5	14.1	92.7	558	58.8
	133	77.8	1.4	16.7	4.2	1.8	73.2	453	68.3
5236 Travel Sales	111	62.5	10.9	23.4	3.1	14.9	82.5	487	60.6
	88	80.0	3.6	12.7	3.6	4.3	95.5	463	78.6
	112	82.4	5.4	6.8	5.4	6.2	80.3	439	73.5
5268 Retail Butchery	213	77.9	7.6	7.6	6.9	8.9	91.2	469	81.7
	194	81.7	6.9	8.4	3.1	7.8	97.2	480	83.7
	200	86.0	5.0	6.6	2.5	5.5	93.3	426	79.4
5270 Breadmaking	51	48.3	20.7	24.1	6.9	30.0	100.0	473	64.3
	50	57.6	12.1	24.2	6.1	17.4	100.0	395	31.6
	52	56.8	10.8	18.9	13.5	16.0	85.7	432	44.4
5283 Hotel Reception	102	59.6	11.5	19.2	9.6	16.2	74.2	523	52.2
	96	62.3	17.0	9.4	11.3	21.4	84.8	411	39.3
	66	63.6	18.2	13.6	4.5	22.2	85.7	392	66.7
5293 Food and Beverage Services	285	68.5	4.7	24.2	2.7	6.4	63.7	500	78.5
	298	68.1	3.7	21.5	6.8	5.1	66.9	506	74.7
	322	72.3	3.5	18.8	5.4	4.6	74.0	470	71.3
5297 Pastry Making	261	64.1	7.6	23.5	4.7	10.7	85.3	470	65.6
	272	69.6	8.2	15.2	7.0	10.5	84.9	425	69.3
	263	72.6	8.5	15.2	3.7	10.5	90.8	417	75.9
5311 Professional Cooking	916	71.8	7.2	19.0	2.0	9.1	85.3	519	85.0
	842	72.2	4.6	19.2	4.0	6.0	83.0	485	88.4
	879	75.7	3.3	15.8	5.3	4.1	87.6	467	81.1
5314 Wine Service	110	81.0	3.2	11.1	4.8	3.8	76.5	676	89.7
	118	88.9	0.0	6.9	4.2	0.0	79.7	624	88.2
	92	92.1	1.6	4.8	1.6	1.7	81.0	655	80.9
5324 Contemporary Cuisine	138	80.2	3.7	12.3	3.7	4.4	87.7	555	89.5
	78	80.9	4.3	12.8	2.1	5.0	86.8	563	81.8
	93	81.2	1.4	14.5	2.9	1.8	92.9	529	98.1

Employment situation of graduates with Diploma of Vocational Studies or an Attestation of Vocational Specialization on March 31 of the survey year

	SITUATION IN 2009 SITUATION IN 2008 SITUATION IN 2007	SITUATION ON MARCH 31					FULL-TIME EMPLOYMENT AND CHARACTERISTICS			
		TARGET GRADUATES	EMPLOYED	SEEKING EMPLOYMENT	STUDYING	INACTIVE	UNEMPLOYMENT RATE	WORKING FULL-TIME	AVERAGE GROSS WEEKLY SALARY	WORKING IN RELATED FIELD
		N	(%)	(%)	(%)	(%)	(%)	(%)	(\$)	(%)
FOOD SERVICES AND TOURISM (cont.)		2 510	70.4	7.3	18.4	4.0	9.4	83.1	509	80.1
		2 388	72.4	6.2	16.3	5.1	7.9	83.7	489	78.3
		2 384	76.0	4.8	14.6	4.6	6.0	85.1	468	77.8
5736 Travel Sales*										
		37	90.0	5.0	0.0	5.0	5.3	77.8	431	71.4
		18	83.3	8.3	0.0	8.3	9.1	90.0	554	55.6
5768 Retail Butchery*										
		8	100.0	0.0	0.0	0.0	0.0	83.3	441	100.0
5783 Hotel Reception*		58	65.5	6.9	27.6	0.0	9.5	89.5	435	76.5
		78	61.5	7.7	26.9	3.8	11.1	71.9	449	69.6
		39	60.9	13.0	21.7	4.3	17.6	92.9	444	61.5
5793 Food and Beverage Services*										
		15	77.8	0.0	22.2	0.0	0.0	71.4	385	60.0
5797 Pastry Making*										
		37	65.0	10.0	5.0	20.0	13.3	92.3	406	75.0
		43	67.9	14.3	14.3	3.6	17.4	78.9	473	73.3
5824 Contemporary Cuisine*										
		12	80.0	0.0	20.0	0.0	0.0	87.5	519	71.4
		21	53.8	7.7	38.5	0.0	12.5	57.1	630	50.0
ARTS		392	70.4	8.3	13.9	7.4	10.5	77.2	445	68.8
		395	73.8	10.3	9.9	6.1	12.2	79.9	434	61.9
		416	80.6	7.4	8.5	3.5	8.4	80.8	429	70.2
5005 Interior Decorating and Display		272	79.6	6.6	9.2	4.6	7.6	76.0	454	72.8
		261	76.5	7.8	9.6	6.0	9.3	81.9	428	70.2
		258	82.2	8.0	6.7	3.1	8.8	81.3	439	75.2
5085 Jewellery Making and Repair		38	56.5	8.7	17.4	17.4	13.3	92.3	338	83.3
		48	67.6	20.6	2.9	8.8	23.3	87.0	423	55.0
		55	70.6	5.9	17.6	5.9	7.7	70.8	341	82.4

5178	Stone Cutting	11	50.0	12.5	25.0	12.5	20.0	75.0	542	100.0
		13	88.9	11.1	0.0	0.0	11.1	100.0	535	87.5
5326	Photography	46	55.2	10.3	24.1	10.3	15.8	81.3	423	38.5
		56	75.6	8.9	8.9	6.7	10.5	67.6	439	30.4
		48	79.4	8.8	8.8	2.9	10.0	70.4	414	52.6
5505	Interior Decorating and Display*	25	44.4	16.7	27.8	11.1	27.3	62.5	486	20.0
		30	55.6	16.7	27.8	0.0	23.1	80.0	532	62.5
WOODWORKING AND FURNITURE MAKING		428	62.7	12.2	14.4	10.7	16.3	87.1	513	66.2
		581	67.7	8.3	17.2	6.8	11.0	89.6	518	72.1
		703	69.8	9.2	14.1	6.9	11.7	90.8	507	66.6
1442	Templates and prototypes									
		10	88.9	0.0	11.1	0.0	0.0	87.5	452	57.1
5030	Cabinet Making	283	64.9	10.8	12.4	11.9	14.3	84.2	506	65.3
		315	65.7	6.1	19.7	8.5	8.5	91.4	518	71.9
		474	69.7	9.6	13.6	7.1	12.1	90.2	504	61.6
5031	Industrial Upholstery									
		11	66.7	22.2	0.0	11.1	25.0	50.0	565	0.0
5080	Hand-Crafted Upholstery	7	66.7	0.0	16.7	16.7	0.0	100.0	443	100.0
		12	62.5	12.5	12.5	12.5	16.7	100.0	440	80.0
		25	77.8	11.1	5.6	5.6	12.5	92.9	478	76.9
5142	Furniture Finishing	62	56.8	10.8	21.6	10.8	16.0	95.2	548	60.0
		104	73.0	12.2	9.5	5.4	14.3	88.9	470	79.2
		114	72.2	8.3	11.1	8.3	10.3	94.2	505	85.7
5157	Model Making	8	66.7	16.7	16.7	0.0	20.0	100.0	595	25.0
		15	53.8	23.1	23.1	0.0	30.0	85.7	555	66.7
		17	63.6	9.1	27.3	0.0	12.5	85.7	716	50.0
5530	Cabinet Making*	39	65.0	15.0	10.0	10.0	18.8	92.3	504	91.7
		51	86.7	10.0	3.3	0.0	10.3	92.3	479	66.7
5642	Furniture Finishing*	20	41.7	25.0	33.3	0.0	37.5	80.0	599	75.0
		34	47.4	10.5	36.8	5.3	18.2	66.7	650	83.3

Employment situation of graduates with Diploma of Vocational Studies or an Attestation of Vocational Specialization on March 31 of the survey year

	TARGET GRADUATES	SITUATION ON MARCH 31					FULL-TIME EMPLOYMENT AND CHARACTERISTICS			
		EMPLOYED	SEEKING EMPLOYMENT	STUDYING	INACTIVE	UNEMPLOYMENT RATE	WORKING FULL-TIME	AVERAGE GROSS WEEKLY SALARY	WORKING IN RELATED FIELD	
		(%)	(%)	(%)	(%)	(%)	(%)	(\$)	(%)	
	N									
CHEMISTRY AND BIOLOGY	32	94.1	5.9	0.0	0.0	5.9	93.8	830	93.3	
	46	95.8	4.2	0.0	0.0	4.2	100.0	763	95.7	
	51	88.9	5.6	5.6	0.0	5.9	84.4	731	88.9	
5213 Water Treatment Process Control	32	94.1	5.9	0.0	0.0	5.9	93.8	830	93.3	
	46	95.8	4.2	0.0	0.0	4.2	100.0	763	95.7	
	51	88.9	5.6	5.6	0.0	5.9	84.4	731	88.9	
BUILDINGS AND PUBLIC WORKS*	5 372	68.2	14.2	13.8	3.8	17.3	94.5	722	79.0	
	5 245	75.8	9.6	10.8	3.7	11.3	95.0	701	77.5	
	4 815	73.8	10.8	11.2	4.2	12.8	95.0	682	78.2	
1928 Carpentry*										
	55	70.0	20.0	6.7	3.3	22.2	95.2	622	75.0	
	86	65.2	28.3	0.0	6.5	30.2	96.7	602	75.9	
5032 Roofing	137	67.6	15.5	14.1	2.8	18.6	89.6	973	81.4	
	107	86.7	5.0	1.7	6.7	5.5	92.3	870	64.6	
	100	76.8	7.2	5.8	10.1	8.6	94.3	806	74.0	
5115 Floor and Wall Covering Installations	27	77.8	16.7	5.6	0.0	17.6	85.7	676	41.7	
	29	84.2	5.3	10.5	0.0	5.9	87.5	832	78.6	
	56	62.5	15.6	18.8	3.1	20.0	95.0	687	42.1	
5116 Commercial and Residential Painting	167	59.3	24.2	9.9	6.6	28.9	94.4	754	86.3	
	159	68.1	24.2	3.3	4.4	26.2	93.5	629	77.6	
	145	66.7	16.1	9.2	8.0	19.4	91.4	671	79.2	
5117 Preparing and Finishing Concrete	31	68.8	25.0	6.3	0.0	26.7	81.8	704	55.6	
	39	61.5	26.9	0.0	11.5	30.4	68.8	850	90.9	
	46	69.2	11.5	0.0	19.2	14.3	94.4	676	47.1	
5118 Interior Systems Installation	212	60.5	23.4	10.5	5.6	27.9	97.3	786	76.7	
	256	76.4	16.2	4.7	2.7	17.5	96.5	704	60.6	
	230	74.6	14.8	7.4	3.3	16.5	96.7	702	61.4	
5119 Insulation Installation	18	78.6	14.3	0.0	7.1	15.4	100.0	813	72.7	
	34	75.0	12.5	8.3	4.2	14.3	100.0	978	94.4	

5140	Glass Cutting, Forming and Finishing									
		10	85.7	14.3	0.0	0.0	14.3	100.0	536	50.0
5146	Stationary Equipment Mechanics	72	76.7	4.7	18.6	0.0	5.7	100.0	843	81.8
		90	92.9	7.1	0.0	0.0	7.1	94.2	815	85.7
		79	85.1	10.6	4.3	0.0	11.1	100.0	783	90.0
5148	Plumbing and Heating	523	77.6	13.9	5.6	2.9	15.2	98.1	682	85.7
		510	86.6	8.5	2.4	2.4	8.9	98.6	686	86.5
		470	84.2	8.4	5.0	2.5	9.0	97.1	680	84.5
5172	Gas Appliance Repair	27	68.4	21.1	10.5	0.0	23.5	100.0	694	53.8
		22	94.7	5.3	0.0	0.0	5.3	100.0	787	83.3
		25	84.2	15.8	0.0	0.0	15.8	100.0	743	81.3
5211	General Building Maintenance	206	72.1	10.1	14.7	3.1	12.3	81.7	652	69.7
		212	74.8	8.4	14.0	2.8	10.1	85.0	643	70.3
		176	55.3	17.1	26.0	1.6	23.6	85.3	539	72.4
5214	RV Maintenance and Repair	12	50.0	12.5	12.5	25.0	20.0	75.0	604	66.7
		15	58.3	0.0	8.3	33.3	0.0	100.0	680	57.1
5215	Masonry Restoration	41	50.0	12.5	25.0	12.5	20.0	100.0	1 185	83.3
		29	72.2	0.0	11.1	16.7	0.0	84.6	963	81.8
		146	70.2	21.4	2.4	6.0	23.4	100.0	672	84.7
5238	Surveying and Topography	133	76.3	10.0	8.8	5.0	11.6	100.0	715	88.5
		118	73.9	15.9	1.4	8.7	17.7	96.1	742	95.9
		303	76.7	11.4	9.3	2.6	12.9	95.9	529	82.4
5250	Residential and Commercial Drafting	355	84.3	7.4	5.7	2.6	8.1	97.9	548	82.0
		375	81.8	8.7	7.5	2.0	9.6	97.6	511	81.2
		10	50.0	25.0	25.0	0.0	33.3	75.0	476	66.7
5272	Hardware Sales	14	90.9	0.0	0.0	9.1	0.0	100.0	513	80.0
		61	83.9	6.5	6.5	3.2	7.1	100.0	933	80.8
		72	82.0	12.0	4.0	2.0	12.8	97.6	717	67.5
5282	Glass Assembly and Installation	64	73.2	14.6	9.8	2.4	16.7	90.0	629	66.7
		99	61.3	17.7	14.5	6.5	22.4	94.7	747	83.3
		98	79.0	6.5	9.7	4.8	7.5	91.8	691	68.9
5286	Plastering	112	79.1	13.4	3.0	4.5	14.5	92.5	640	67.3

Employment situation of graduates with Diploma of Vocational Studies or an Attestation of Vocational Specialization on March 31 of the survey year

SITUATION IN 2009 SITUATION IN 2008 SITUATION IN 2007	SITUATION ON MARCH 31					FULL-TIME EMPLOYMENT AND CHARACTERISTICS			
	TARGET GRADUATES	EMPLOYED	SEEKING EMPLOYMENT	STUDYING	INACTIVE	UNEMPLOYMENT RATE	WORKING FULL-TIME	AVERAGE GROSS WEEKLY SALARY	WORKING IN RELATED FIELD
	N	(%)	(%)	(%)	(%)	(%)	(%)	(\$)	(%)
BUILDINGS AND PUBLIC WORKS* (cont.)	5 372	68.2	14.2	13.8	3.8	17.3	94.5	722	79.0
	5 245	75.8	9.6	10.8	3.7	11.3	95.0	701	77.5
	4 815	73.8	10.8	11.2	4.2	12.8	95.0	682	78.2
5300 Tiling	133	80.6	9.7	8.3	1.4	10.8	91.4	707	67.9
	121	85.3	8.8	2.9	2.9	9.4	91.4	712	69.8
	88	77.6	10.3	6.9	5.2	11.8	95.6	699	69.8
5303 Masonry: Bricklaying	538	69.4	19.4	5.6	5.6	21.9	91.9	690	68.6
	488	72.3	13.5	5.9	8.3	15.8	94.5	686	69.1
	390	77.1	11.5	4.7	6.7	12.9	94.4	650	65.8
5312 Fire Protection Devices, Installation and Maintenance	32	84.2	10.5	5.3	0.0	11.1	100.0	761	100.0
	50	96.9	0.0	3.1	0.0	0.0	96.8	727	76.7
	32	100.0	0.0	0.0	0.0	0.0	100.0	706	90.0
5315 Refrigeration	258	82.1	9.0	5.1	3.8	9.9	96.1	670	81.3
	234	91.4	6.2	1.2	1.2	6.3	91.9	653	84.6
	245	88.6	7.8	2.4	1.2	8.1	95.9	659	86.6
5319 Carpentry	1 590	74.0	15.4	5.9	4.6	17.2	96.9	762	86.4
	1 492	80.3	11.7	3.3	4.7	12.7	96.6	712	85.1
	1 375	78.9	13.2	3.0	5.0	14.4	96.0	722	85.3
5322 Fire Safety Techniques	534	36.3	1.1	62.3	0.3	2.9	83.5	766	36.0
	568	43.5	0.5	55.5	0.5	1.1	88.6	792	40.2
	457	40.7	0.9	58.4	0.0	2.1	84.1	784	50.0
5648 Plumbing and Heating*	16	45.5	36.4	18.2	0.0	44.4	100.0	593	100.0
	19	84.6	7.7	7.7	0.0	8.3	100.0	622	72.7
	17	90.9	9.1	0.0	0.0	9.1	100.0	610	90.0
5750 Residential and Commercial Drafting*	12	66.7	11.1	22.2	0.0	14.3	100.0	685	50.0

5786	Plastering*	7	80.0	0.0	20.0	0.0	0.0	100.0	746	75.0
5803	Masonry: Bricklaying*	6	100.0	0.0	0.0	0.0	0.0	75.0	665	33.3
5815	Refrigeration*	9	28.6	14.3	14.3	42.9	33.3	100.0	x	100.0
		21	71.4	21.4	0.0	7.1	23.1	100.0	670	60.0
		12	44.4	33.3	11.1	11.1	42.9	100.0	903	100.0
LAND USE PLANNING AND THE ENVIRONMENT*		96	61.2	17.9	17.9	3.0	22.6	90.2	565	40.5
		103	65.3	11.1	13.9	9.7	14.5	91.5	584	39.5
		88	61.2	6.0	19.4	13.4	8.9	90.2	518	40.5
5179	Protection and Development of Wildlife Habitats	96	61.2	17.9	17.9	3.0	22.6	90.2	565	40.5
		103	65.3	11.1	13.9	9.7	14.5	91.5	584	39.5
		88	61.2	6.0	19.4	13.4	8.9	90.2	518	40.5
ELECTROTECHNOLOGY		2 389	75.6	13.4	9.1	1.9	15.0	94.9	709	78.4
		2 732	78.6	10.4	9.6	1.3	11.7	95.1	665	73.7
		2 717	78.5	10.9	8.6	2.0	12.2	95.6	649	74.7
5024	Household Appliance Repair	9	100.0	0.0	0.0	0.0	0.0	66.7	520	100.0
		32	68.8	6.3	12.5	12.5	8.3	100.0	564	81.8
		26	72.7	13.6	4.5	9.1	15.8	81.3	534	76.9
5185	Electrical Power Line Installation	121	86.6	9.8	1.2	2.4	10.1	95.8	1 062	92.6
		95	83.8	8.8	7.4	0.0	9.5	96.5	926	83.6
		75	87.0	9.3	0.0	3.7	9.6	97.9	949	84.8
5265	Office Automation Technical Services	7	33.3	33.3	33.3	0.0	50.0	100.0	x	50.0
		32	81.0	9.5	9.5	0.0	10.5	88.2	534	80.0
		60	71.4	20.0	5.7	2.9	21.9	96.0	467	62.5
5266	Installation and Repair of Telecommunications Equipment	76	77.3	13.6	9.1	0.0	15.0	85.3	572	72.4
		85	81.1	5.7	11.3	1.9	6.5	100.0	592	86.0
		70	85.7	7.1	4.8	2.4	7.7	88.9	649	87.5
5271	Electronic Audio/Video Equipment Repair	70	71.7	13.0	13.0	2.2	15.4	93.9	528	74.2
		121	81.6	5.7	11.5	1.1	6.6	88.7	457	55.6
		116	69.1	6.2	23.5	1.2	8.2	94.6	440	56.6
5280	Business Equipment Network Linkage	17	61.5	23.1	15.4	0.0	27.3	87.5	571	71.4
		22	61.1	11.1	22.2	5.6	15.4	100.0	477	63.6

Employment situation of graduates with Diploma of Vocational Studies or an Attestation of Vocational Specialization on March 31 of the survey year

		SITUATION ON MARCH 31					FULL-TIME EMPLOYMENT AND CHARACTERISTICS			
		TARGET GRADUATES	EMPLOYED	SEEKING EMPLOYMENT	STUDYING	INACTIVE	UNEMPLOYMENT RATE	WORKING FULL-TIME	AVERAGE GROSS WEEKLY SALARY	WORKING IN RELATED FIELD
			N	(%)	(%)	(%)	(%)	(%)	(%)	(\$)
ELECTROTECHNOLOGY (cont.)		2 389	75.6	13.4	9.1	1.9	15.0	94.9	709	78.4
		2 732	78.6	10.4	9.6	1.3	11.7	95.1	665	73.7
		2 717	78.5	10.9	8.6	2.0	12.2	95.6	649	74.7
5281	Automated Systems Electromechanics	700	75.9	11.8	10.2	2.1	13.5	96.0	701	79.9
		749	78.5	9.3	10.9	1.4	10.6	97.5	716	80.6
		757	78.0	6.9	13.1	1.9	8.2	96.8	685	80.6
5295	Electricity	1 205	75.9	13.5	8.8	1.8	15.1	95.3	691	77.1
		1 367	78.7	10.6	9.5	1.2	11.9	94.3	656	70.1
		1 360	78.6	13.7	5.8	1.9	14.8	95.5	640	72.2
5296	Security System Installation and Repair	64	81.0	7.1	7.1	4.8	8.1	91.2	671	67.7
		63	85.7	8.6	5.7	0.0	9.1	96.7	558	72.4
		65	100.0	0.0	0.0	0.0	0.0	95.3	594	82.9
5771	Electronic Audio/Video Equipment Repair*									
		13	75.0	12.5	12.5	0.0	14.3	83.3	503	20.0
5781	Automated Systems Electromechanics*	52	42.9	35.7	17.9	3.6	45.5	91.7	641	72.7
		55	64.3	32.1	3.6	0.0	33.3	94.4	658	76.5
		65	77.1	11.4	11.4	0.0	12.9	96.3	621	69.2
5795	Electricity*	60	70.0	23.3	6.7	0.0	25.0	100.0	625	76.2
		110	76.6	20.3	1.6	1.6	21.0	91.8	578	68.9
		91	73.2	12.5	10.7	3.6	14.6	95.1	633	71.8
MOTORIZED EQUIPMENT MAINTENANCE		2 589	77.0	9.4	10.6	3.0	10.8	96.5	580	82.5
		2 607	82.0	6.8	9.7	1.5	7.7	96.3	580	80.4
		2 689	82.5	7.0	8.3	2.1	7.9	98.1	548	81.3
5049	Heavy Road Vehicle Mechanics	340	77.5	6.6	14.6	1.4	7.8	97.6	700	88.8
		360	82.9	4.9	11.8	0.4	5.6	97.5	677	92.0
		355	84.1	4.2	10.5	1.3	4.7	99.0	667	87.4
5055	Construction Equipment Mechanics	261	73.9	11.4	12.5	2.3	13.3	98.5	715	86.7
		257	75.0	8.0	16.5	0.5	9.6	97.9	726	88.4
		212	76.3	7.9	14.4	1.4	9.4	100.0	674	89.6

5070	Farm Machinery Mechanics	70	78.0	4.0	16.0	2.0	4.9	100.0	576	82.1
		63	74.5	8.5	10.6	6.4	10.3	97.1	604	79.4
		78	85.5	3.6	9.1	1.8	4.1	95.7	507	88.9
5154	Light Duty Vehicle Mechanics	118	75.0	8.8	10.3	5.9	10.5	94.1	462	81.3
		104	74.7	6.7	14.7	4.0	8.2	98.2	522	72.7
		123	86.7	8.4	3.6	1.2	8.9	94.4	476	77.9
5194	Sale of Mechanical Parts and Accessories	127	72.0	12.2	9.8	6.1	14.5	94.9	513	83.9
		137	77.9	8.7	8.7	4.8	10.0	96.3	526	76.9
		151	78.0	9.0	8.0	5.0	10.3	97.4	509	72.4
5217	Automotive Body Repair and Accessories	340	79.0	9.0	7.0	5.0	10.2	96.8	522	76.5
		363	84.7	5.1	8.2	2.0	5.7	95.4	542	70.9
		389	85.1	6.8	7.2	0.8	7.4	98.1	521	77.4
5232	Motorcycle Mechanic									
		8	57.1	28.6	14.3	0.0	33.3	75.0	569	33.3
5258	Motor Vehicle Customer Service	57	77.4	12.9	9.7	0.0	14.3	100.0	643	75.0
		58	89.2	5.4	2.7	2.7	5.7	97.0	619	84.4
		53	91.2	5.9	0.0	2.9	6.1	100.0	544	90.3
5259	Diesel and Electronic Control Mechanics	80	84.9	1.9	13.2	0.0	2.2	97.8	710	97.7
		58	90.5	7.1	2.4	0.0	7.3	94.7	694	94.4
		60	92.5	5.0	2.5	0.0	5.1	100.0	689	94.6
5298	Automobile Mechanics	1 004	78.1	10.0	9.1	2.8	11.4	95.4	530	81.5
		1 001	84.3	7.4	7.6	0.8	8.1	96.8	538	79.4
		1 057	82.2	7.0	8.5	2.4	7.8	98.5	506	80.4
5717	Automotive Body Repair and Repainting*									
		12	100.0	0.0	0.0	0.0	0.0	100.0	551	50.0
5798	Automobile Mechanics*									
		190	79.4	7.2	12.4	1.0	8.3	88.3	489	69.1
		191	76.4	12.3	5.7	5.7	13.8	95.1	501	74.0
MECHANICAL MANUFACTURING		1 357	72.8	14.0	10.4	2.8	16.2	95.9	661	76.7
		1 305	77.5	7.7	12.0	2.9	9.0	98.0	633	79.5
		1 136	78.4	9.6	9.8	2.2	10.9	96.8	586	80.5
5041	Diemaking	9	66.7	16.7	0.0	16.7	20.0	100.0	801	25.0

Employment situation of graduates with Diploma of Vocational Studies or an Attestation of Vocational Specialization on March 31 of the survey year

	TARGET GRADUATES	SITUATION ON MARCH 31					FULL-TIME EMPLOYMENT AND CHARACTERISTICS			
		EMPLOYED	SEEKING EMPLOYMENT	STUDYING	INACTIVE	UNEMPLOYMENT RATE	WORKING FULL-TIME	AVERAGE GROSS WEEKLY SALARY	WORKING IN RELATED FIELD	
		N	(%)	(%)	(%)	(%)	(%)	(%)	(\$)	(%)
MECHANICAL MANUFACTURING (cont.)		1 357	72.8	14.0	10.4	2.8	16.2	95.9	661	76.7
		1 305	77.5	7.7	12.0	2.9	9.0	98.0	633	79.5
		1 136	78.4	9.6	9.8	2.2	10.9	96.8	586	80.5
5193 Moulding Machine Set-up and Operation		32	91.3	0.0	8.7	0.0	0.0	100.0	604	85.7
		26	92.9	7.1	0.0	0.0	7.1	100.0	576	69.2
		101	82.5	8.8	7.0	1.8	9.6	95.7	738	84.4
5197 Aircraft Structural Assembly		135	89.2	1.4	5.4	4.1	1.5	97.0	712	76.6
		86	83.6	10.9	5.5	0.0	11.5	100.0	635	73.9
		381	66.3	18.8	14.1	0.8	22.1	93.5	631	79.7
5223 Machining Technics		357	76.5	8.0	13.9	1.6	9.4	99.0	624	83.7
		310	76.9	6.5	14.8	1.9	7.8	97.0	584	87.0
		221	79.0	8.7	7.2	5.1	9.9	97.2	674	84.9
5224 Numerical Control Machine Tool Operation		191	86.0	3.9	9.3	0.8	4.3	98.2	654	83.5
		178	86.3	5.3	6.1	2.3	5.8	99.1	592	87.5
		175	79.0	13.3	4.8	2.9	14.4	96.4	574	83.8
5225 Industrial Drafting		164	77.6	6.9	10.3	5.2	8.2	96.7	574	86.2
		149	73.9	15.2	6.5	4.3	17.1	91.2	542	79.0
		5244								
5244 Precision Sheet-Metal Working		35	69.2	7.7	19.2	3.8	10.0	100.0	662	66.7
		25	81.3	12.5	6.3	0.0	13.3	100.0	709	76.9
		5249								
5249 Mould Making		6	100.0	0.0	0.0	0.0	0.0	100.0	591	100.0
		44	74.2	9.7	12.9	3.2	11.5	100.0	706	65.2
		50	75.7	5.4	13.5	5.4	6.7	96.4	575	81.5
5267 Use of Composite Materials		68	65.3	14.3	18.4	2.0	17.9	93.8	594	63.3
		46	69.0	17.2	13.8	0.0	20.0	100.0	568	70.0
		90	65.2	12.1	16.7	6.1	15.7	95.3	625	51.2
5269 Cable and Circuit Assembly		66	88.9	11.1	0.0	0.0	11.1	95.0	663	78.9

5307	Aircraft Mechanical Assembly	22	66.7	13.3	13.3	6.7	16.7	100.0	748	50.0
		21	86.7	6.7	6.7	0.0	7.1	100.0	940	92.3
5310	Production Equipment Operation	165	73.3	13.8	7.8	5.2	15.8	97.6	781	59.0
		110	67.5	15.0	12.5	5.0	18.2	96.3	589	59.6
		73	70.2	12.3	10.5	7.0	14.9	97.5	483	61.5
5697	Aircraft Structural Assembly	23	68.8	25.0	6.3	0.0	26.7	100.0	655	72.7
		10	62.5	25.0	12.5	0.0	28.6	100.0	400	100.0
5723	Machining Technics*	64	71.4	11.4	14.3	2.9	13.8	100.0	544	92.0
		61	73.5	11.8	11.8	2.9	13.8	96.0	535	91.7
5724	Numerical Control Machine Tool Operation*	39	76.2	14.3	9.5	0.0	15.8	100.0	611	87.5
		29	70.6	17.6	11.8	0.0	20.0	100.0	807	75.0
5725	Industrial Drafting*	32	77.8	5.6	16.7	0.0	6.7	92.9	618	53.8
		319	58.5	16.6	13.7	11.2	22.1	92.5	733	60.4
FORESTRY AND PULP AND PAPER®		520	61.5	19.7	9.6	9.3	24.2	90.7	737	53.9
		634	71.9	12.4	10.1	5.6	14.7	93.4	762	63.5
5073	Tool Sharpening	18	75.0	25.0	0.0	0.0	25.0	100.0	735	66.7
		19	93.3	6.7	0.0	0.0	6.7	92.9	770	84.6
		7	16.7	0.0	66.7	16.7	0.0	100.0	x	0.0
5088	Wood Sawing	20	87.5	6.3	0.0	6.3	6.7	100.0	634	85.7
		73	62.5	22.9	6.3	8.3	26.8	100.0	791	53.3
		153	60.0	25.5	4.5	10.0	29.8	92.4	793	54.1
5189	Tree Cutting and Processing	176	72.7	13.6	6.1	7.6	15.8	97.9	805	64.9
		11	77.8	22.2	0.0	0.0	22.2	100.0	646	42.9
		6	60.0	20.0	20.0	0.0	25.0	100.0	654	66.7
5208	Lumber Grading	92	62.5	14.1	18.8	4.7	18.4	82.5	797	54.5
		168	74.4	15.5	7.0	3.1	17.2	85.4	785	57.3
		251	80.4	10.1	8.9	0.6	11.1	89.6	778	55.8

Employment situation of graduates with Diploma of Vocational Studies or an Attestation of Vocational Specialization on March 31 of the survey year

	SITUATION IN 2009 SITUATION IN 2008 SITUATION IN 2007	SITUATION ON MARCH 31					FULL-TIME EMPLOYMENT AND CHARACTERISTICS			
		TARGET GRADUATES	EMPLOYED	SEEKING EMPLOYMENT	STUDYING	INACTIVE	UNEMPLOYMENT RATE	WORKING FULL-TIME	AVERAGE GROSS WEEKLY SALARY	WORKING IN RELATED FIELD
		N	(%)	(%)	(%)	(%)	(%)	(%)	(\$)	(%)
FORESTRY AND PULP AND PAPER* (cont.)		319	58.5	16.6	13.7	11.2	22.1	92.5	733	60.4
		520	61.5	19.7	9.6	9.3	24.2	90.7	737	53.9
		634	71.9	12.4	10.1	5.6	14.7	93.4	762	63.5
5289 Sylvicultural Work		54	23.3	36.7	10.0	30.0	61.1	100.0	636	57.1
		27	23.5	17.6	29.4	29.4	42.9	100.0	760	100.0
		10	75.0	25.0	0.0	0.0	25.0	100.0	598	50.0
5290 Manual Felling and Tree Removal		22	60.0	0.0	26.7	13.3	0.0	100.0	533	55.6
		33	52.2	8.7	34.8	4.3	14.3	83.3	557	50.0
		70	47.7	13.6	15.9	22.7	22.2	95.2	597	70.0
5306 Forest Management		95	53.2	14.5	21.0	11.3	21.4	93.9	531	35.5
		100	55.9	20.3	11.9	11.9	26.7	97.0	699	75.0
		342	70.9	12.7	14.6	1.9	15.2	88.7	511	70.9
COMMUNICATIONS AND DOCUMENTATION		437	71.7	11.2	11.9	5.2	13.5	87.3	468	66.5
		483	74.8	11.8	9.6	3.7	13.6	85.9	466	79.2
		217	69.7	14.5	14.5	1.4	17.2	88.1	509	79.8
5221 Desktop Publishing		262	74.0	10.7	11.3	4.0	12.7	86.3	463	66.4
		308	75.2	11.0	10.1	3.7	12.8	84.1	449	80.4
		24	60.0	20.0	6.7	13.3	25.0	100.0	497	88.9
5240 Reprography and Assembly		69	79.5	7.7	12.8	0.0	8.8	87.1	505	59.3
		57	77.5	10.0	7.5	5.0	11.4	90.3	480	71.4
		93	84.9	3.8	7.5	3.8	4.3	93.3	502	78.6
5721 Desktop Publishing*		33	64.7	5.9	17.6	11.8	8.3	100.0	553	45.5
		66	73.0	8.1	13.5	5.4	10.0	85.2	470	65.2
		57	66.7	16.7	13.9	2.8	20.0	83.3	457	70.0
5746 Printing*		13	50.0	25.0	25.0	0.0	33.3	100.0	448	0.0
		28	41.2	17.6	29.4	11.8	30.0	85.7	450	16.7
		20	41.7	50.0	0.0	8.3	54.5	80.0	500	75.0

MAINTENANCE MECHANICS	518	77.6	8.3	12.9	1.2	9.6	96.0	769	77.8
	542	81.2	5.6	11.8	1.3	6.5	95.0	750	81.3
	542	78.1	8.0	13.1	0.8	9.3	98.0	730	80.2
1489 Firearm Repair									
	7	80.0	0.0	0.0	20.0	0.0	75.0	493	0.0
	13	62.5	0.0	25.0	12.5	0.0	80.0	534	50.0
5006 Industrial Control Maintenance Mechanic	54	82.4	5.9	11.8	0.0	6.7	92.9	797	80.8
	61	73.7	2.6	21.1	2.6	3.4	100.0	767	82.1
	53	73.0	5.4	21.6	0.0	6.9	96.3	634	73.1
5012 Preventive and Prospective Industrial Maintenance Mechanics									
	9	83.3	16.7	0.0	0.0	16.7	100.0	588	60.0
5162 Locksmithing									
	7	100.0	0.0	0.0	0.0	0.0	100.0	467	83.3
	11	85.7	0.0	14.3	0.0	0.0	100.0	503	83.3
5182 Watchmaking									
	7	40.0	0.0	60.0	0.0	0.0	100.0	x	0.0
5200 Elevator Mechanics	38	92.0	0.0	8.0	0.0	0.0	100.0	797	87.0
	38	96.2	0.0	3.8	0.0	0.0	100.0	788	88.0
	38	100.0	0.0	0.0	0.0	0.0	100.0	815	80.0
5260 Industrial Construction and Maintenance Mechanics	389	74.9	9.3	14.2	1.6	11.1	96.2	773	78.1
	403	80.1	6.4	12.5	1.1	7.4	94.7	761	81.2
	406	77.9	9.7	11.7	0.7	11.1	98.3	747	81.7
5760 Industrial Construction and Maintenance Mechanics									
	7	100.0	0.0	0.0	0.0	0.0	80.0	729	100.0
MINING AND SITE OPERATIONS^a	797	63.7	25.7	6.3	4.3	28.7	94.9	970	72.1
	674	71.7	20.5	3.0	4.8	22.2	95.5	882	72.5
	485	69.4	20.4	5.4	4.8	22.7	93.6	882	72.1
5092 Drilling and Blasting	29	53.3	13.3	20.0	13.3	20.0	100.0	1 615	100.0
	32	72.2	11.1	0.0	16.7	13.3	100.0	1 505	100.0
	27	76.5	23.5	0.0	0.0	23.5	100.0	1 260	69.2

Employment situation of graduates with Diploma of Vocational Studies or an Attestation of Vocational Specialization on March 31 of the survey year

	SITUATION IN 2009 SITUATION IN 2008 SITUATION IN 2007	SITUATION ON MARCH 31					FULL-TIME EMPLOYMENT AND CHARACTERISTICS			
		TARGET GRADUATES	EMPLOYED	SEEKING EMPLOYMENT	STUDYING	INACTIVE	UNEMPLOYMENT RATE	WORKING FULL-TIME	AVERAGE GROSS WEEKLY SALARY	WORKING IN RELATED FIELD
		N	(%)	(%)	(%)	(%)	(%)	(%)	(\$)	(%)
MINING AND SITE OPERATIONS* (cont.)		797	63.7	25.7	6.3	4.3	28.7	94.9	970	72.1
		674	71.7	20.5	3.0	4.8	22.2	95.5	882	72.5
		485	69.4	20.4	5.4	4.8	22.7	93.6	882	72.1
5220 Construction Equipment Operation		194	65.1	28.4	3.7	2.8	30.4	97.2	964	69.6
		168	66.4	24.3	1.9	7.5	26.8	95.8	861	75.0
		112	68.6	20.0	2.9	8.6	22.6	93.8	805	75.6
5248 Crane Operation		58	80.5	17.1	0.0	2.4	17.5	84.8	1 129	92.9
		60	85.4	7.3	0.0	7.3	7.9	94.3	1 053	97.0
		15	100.0	0.0	0.0	0.0	0.0	72.7	1 136	100.0
5253 Diamond Drilling		48	56.0	36.0	0.0	8.0	39.1	100.0	959	78.6
		50	80.0	13.3	0.0	6.7	14.3	100.0	1 010	75.0
		31	94.7	5.3	0.0	0.0	5.3	100.0	1 245	77.8
5261 Ore Extraction		157	60.8	32.4	2.9	3.9	34.7	100.0	1 083	59.7
		56	94.1	5.9	0.0	0.0	5.9	100.0	1 142	90.6
		34	90.9	9.1	0.0	0.0	9.1	100.0	1 160	95.0
5273 Machinery Operation - Forestry Roads		293	60.8	23.3	11.1	4.8	27.7	93.0	792	70.1
		279	65.6	26.6	5.2	2.6	28.8	92.9	725	55.6
		257	60.7	25.0	8.9	5.4	29.2	92.2	728	62.8
5274 Machine Operations, Mineral and Metal Processing		10	100.0	0.0	0.0	0.0	0.0	85.7	1 369	100.0
		15	100.0	0.0	0.0	0.0	0.0	100.0	985	70.0
		9	85.7	14.3	0.0	0.0	14.3	100.0	861	66.7
METALLURGICAL TECHNOLOGY		1 387	70.5	13.6	12.5	3.4	16.1	97.2	725	84.6
		1 329	76.6	10.2	11.1	2.1	11.8	97.0	696	84.9
		1 300	81.6	7.1	8.6	2.8	8.0	97.1	651	85.5
5076 Concrete Reinforcing Martial Installation		39	60.0	15.0	5.0	20.0	20.0	91.7	1 146	81.8
		37	61.9	19.0	4.8	14.3	23.5	84.6	1 045	72.7
		34	50.0	0.0	0.0	50.0	0.0	80.0	663	50.0
5165 Boilermaking		23	52.9	35.3	0.0	11.8	40.0	100.0	1 069	100.0
		17	100.0	0.0	0.0	0.0	0.0	100.0	994	100.0

5195	Welding and Fitting	764	69.1	13.1	14.9	2.9	16.0	96.6	687	87.1
		724	75.3	8.3	14.9	1.5	9.9	96.7	644	88.9
		770	81.5	7.5	9.4	1.7	8.4	96.9	618	86.4
5203	Foundry Work	34	89.5	5.3	5.3	0.0	5.6	88.2	617	86.7
		22	88.2	5.9	5.9	0.0	6.3	100.0	620	73.3
		18	81.8	18.2	0.0	0.0	18.2	88.9	668	87.5
5233	Sheet Metal Work	92	81.5	7.4	7.4	3.7	8.3	100.0	819	90.9
		119	76.9	14.1	7.7	1.3	15.5	96.7	761	79.3
		108	87.1	7.1	2.9	2.9	7.6	98.4	686	93.3
5234	High-Pressure Welding	219	73.1	14.5	10.3	2.1	16.5	100.0	744	74.5
		230	78.8	12.5	6.3	2.5	13.7	96.8	726	76.2
		216	87.9	3.0	7.6	1.5	3.3	99.1	666	80.0
5299	Structural and Architectural Assembly	56	71.9	15.6	3.1	9.4	17.9	95.7	866	86.4
		54	69.4	25.0	2.8	2.8	26.5	100.0	968	92.0
		24	88.9	11.1	0.0	0.0	11.1	100.0	956	81.3
5308	Metal Structure and Wrought Metal Manufacturing									
		25	81.3	6.3	12.5	0.0	7.1	100.0	604	76.9
		31	66.7	4.8	23.8	4.8	6.7	92.9	597	84.6
5695	Welding and Fitting*									
		68	78.4	8.1	10.8	2.7	9.4	100.0	631	89.7
		70	65.8	15.8	18.4	0.0	19.4	96.0	680	79.2
TRANSPORTATION		1 897	77.2	13.5	3.8	5.5	14.9	94.2	820	84.0
		1 614	83.5	9.0	2.2	5.3	9.8	95.3	782	86.1
		1 543	85.9	8.1	1.6	4.4	8.6	93.8	783	88.4
5291	Trucking	1 821	77.3	13.6	3.5	5.6	14.9	94.2	822	84.2
		1 542	83.7	8.8	2.1	5.4	9.5	95.2	783	85.6
		1 484	86.0	8.0	1.6	4.4	8.5	94.1	785	88.7
5304	Flight Dispatching	14	63.6	0.0	36.4	0.0	0.0	100.0	722	57.1
		14	91.7	0.0	8.3	0.0	0.0	100.0	644	90.9
		12	100.0	0.0	0.0	0.0	0.0	87.5	679	85.7
5791	Trucking*									
		58	73.3	20.0	3.3	3.3	21.4	95.5	831	100.0
		47	78.6	14.3	3.6	3.6	15.4	86.4	751	78.9

Employment situation of graduates with Diploma of Vocational Studies or an Attestation of Vocational Specialization on March 31 of the survey year

	SITUATION IN 2009 SITUATION IN 2008 SITUATION IN 2007	SITUATION ON MARCH 31					FULL-TIME EMPLOYMENT AND CHARACTERISTICS			
		TARGET GRADUATES	EMPLOYED	SEEKING EMPLOYMENT	STUDYING	INACTIVE	UNEMPLOYMENT RATE	WORKING FULL-TIME	AVERAGE GROSS WEEKLY SALARY	WORKING IN RELATED FIELD
		N	(%)	(%)	(%)	(%)	(%)	(%)	(\$)	(%)
FASHION, LEATHER AND TEXTILES		106	61.4	8.6	21.4	8.6	12.2	81.4	440	57.1
		100	69.4	4.2	15.3	11.1	5.7	66.0	436	69.7
		111	62.2	8.5	19.5	9.8	12.1	76.5	439	48.7
5082 Drycleaning and Garment Maintenance		7	40.0	40.0	20.0	0.0	50.0	100.0	x	0.0
		9	88.9	0.0	0.0	11.1	0.0	87.5	400	42.9
5218 Pattern Making		29	68.2	4.5	18.2	9.1	6.3	86.7	443	69.2
		29	55.6	5.6	22.2	16.7	9.1	60.0	389	83.3
		22	66.7	13.3	13.3	6.7	16.7	90.0	436	44.4
5219 Hand-Crafted Garment Making										
		10	50.0	0.0	25.0	25.0	0.0	75.0	300	33.3
		12	60.0	10.0	20.0	10.0	14.3	50.0	468	100.0
5239 Custom Garment Making and Alterations		65	57.9	7.9	26.3	7.9	12.0	77.3	447	47.1
		51	76.9	2.6	12.8	7.7	3.2	60.0	460	66.7
		65	56.5	6.5	26.1	10.9	10.3	73.1	453	47.4
5247 Leather Garment and Accessory Making		5	80.0	0.0	0.0	20.0	0.0	75.0	385	100.0
		7	100.0	0.0	0.0	0.0	0.0	100.0	464	80.0
HEALTH SERVICES		5 445	83.6	4.3	6.9	5.2	4.9	74.6	588	91.8
		5 262	85.4	4.5	5.4	4.8	5.0	74.9	572	91.2
		5 230	85.0	5.1	5.4	4.6	5.6	71.6	541	87.3
5144 Dental Assistance		364	79.7	7.3	6.3	6.8	8.4	78.4	498	87.5
		354	83.3	4.7	5.6	6.5	5.3	79.9	484	84.6
		309	84.3	4.7	7.3	3.7	5.3	84.5	468	88.2
5302 Pharmacy Technical Assistance		381	87.9	3.0	4.3	4.8	3.3	92.6	550	95.2
		336	89.9	3.2	4.0	2.8	3.5	89.7	509	93.0
		307	89.5	3.2	2.7	4.5	3.4	82.2	521	90.7
5316 Assistance in Health Care Establishments		2 135	83.3	4.1	7.1	5.5	4.7	71.3	572	92.4
		1 959	84.8	4.4	5.7	5.1	4.9	73.1	562	90.7
		1 936	84.4	4.3	6.3	5.1	4.8	70.2	524	84.5

5317	Home Care Assistancee	461	86.4	3.1	6.1	4.4	3.4	70.6	547	90.6
		449	85.3	5.2	4.9	4.6	5.8	76.7	541	89.6
		515	84.2	4.0	7.0	4.9	4.5	74.0	520	92.2
5325	Health, Assistance and Nursing*	1 732	85.4	4.0	6.1	4.5	4.4	74.0	656	92.2
		1 726	88.2	3.5	3.8	4.6	3.8	73.2	629	93.9
		1 805	86.0	6.4	4.0	3.6	6.9	67.6	585	88.8
5644	Dental Assistance*	28	73.3	6.7	0.0	20.0	8.3	90.9	466	70.0
		35	60.0	15.0	15.0	10.0	20.0	66.7	562	100.0
5802	Pharmacy Technical Assistance*	36	85.0	15.0	0.0	0.0	15.0	94.1	518	93.8
		24	80.0	6.7	13.3	0.0	7.7	83.3	583	100.0
		25	93.8	0.0	0.0	6.3	0.0	86.7	558	100.0
5816	Assistance in Health Care Establishments*	154	62.5	10.0	23.8	3.8	13.8	78.0	520	82.1
		114	76.7	5.0	6.7	11.7	6.1	69.6	537	71.9
5817	Home Care Assistance*	58	69.7	3.0	21.2	6.1	4.2	69.6	631	93.8
		76	61.4	11.4	18.2	9.1	15.6	70.4	523	84.2
		76	79.1	11.6	4.7	4.7	12.8	73.5	572	88.0
5825	Health, Assistance and Nursing*	133	86.3	5.0	5.0	3.8	5.5	68.1	612	85.1
		119	80.6	8.1	3.2	8.1	9.1	76.0	580	86.8
		2 042	73.7	7.0	13.8	5.5	8.7	77.2	395	70.3
BEAUTY CARE		2 007	78.6	5.2	10.8	5.4	6.2	78.4	359	75.2
		2 128	80.4	4.9	10.9	3.8	5.7	76.9	354	74.4
5035	Aesthetics	640	67.0	6.8	21.2	5.0	9.2	74.2	405	60.5
		517	72.3	5.7	18.5	3.6	7.3	70.0	392	68.2
		591	75.9	5.2	16.0	3.0	6.4	71.8	373	67.4
5068	Electrolysis	257	82.1	7.3	7.9	2.6	8.1	75.0	447	68.8
		290	84.9	3.0	8.0	4.0	3.4	78.1	364	70.5
		363	85.9	3.5	7.5	3.1	3.9	74.4	355	75.5
5245	Hairdressing	917	78.9	4.9	10.0	6.2	5.9	80.4	372	76.5
		949	82.0	5.1	6.3	6.6	5.9	83.5	342	79.6
		951	83.8	4.3	7.9	4.0	4.9	81.7	339	78.7

Employment situation of graduates with Diploma of Vocational Studies or an Attestation of Vocational Specialization on March 31 of the survey year

	TARGET GRADUATES	SITUATION ON MARCH 31					FULL-TIME EMPLOYMENT AND CHARACTERISTICS		
		EMPLOYED	SEEKING EMPLOYMENT	STUDYING	INACTIVE	UNEMPLOYMENT RATE	WORKING FULL-TIME	AVERAGE GROSS WEEKLY SALARY	WORKING IN RELATED FIELD
		N	(%)	(%)	(%)	(%)	(%)	(%)	(\$)
BEAUTY CARE (cont.)	2 042	73.7	7.0	13.8	5.5	8.7	77.2	395	70.3
	2 007	78.6	5.2	10.8	5.4	6.2	78.4	359	75.2
	2 128	80.4	4.9	10.9	3.8	5.7	76.9	354	74.4
5535 Aesthetics*									
	85	62.0	10.0	22.0	6.0	13.9	71.0	407	77.3
	68	60.5	7.9	26.3	5.3	11.5	78.3	424	61.1
5568 Electrolysis*									
	28	58.8	11.8	5.9	23.5	16.7	50.0	349	60.0
	30	56.3	12.5	25.0	6.3	18.2	77.8	424	57.1
5745 Hairdressing*									
	28	46.7	6.7	26.7	20.0	12.5	71.4	447	80.0
	113	61.3	21.0	12.9	4.8	25.5	76.3	350	72.4
	136	77.9	5.2	10.4	6.5	6.3	73.3	339	75.0
	127	72.7	12.1	9.1	6.1	14.3	68.8	346	66.7

NOTES

1. Given the confidential nature of the data and a concern for maintaining the anonymity of the respondents, results for programs for which the number of graduates is less than five are not presented here. A list of these programs can be consulted in the survey report.
2. In cases where the response rate does not meet publication requirements, the results are not presented. A list of these programs can be consulted in the survey report.
3. Because of the small number of graduates in certain programs, results in such cases should be interpreted with caution.
4. The programs have been classified according to their most recent codes. However, the results take into consideration data pertaining to the corresponding earlier programs.
5. The abbreviation “n.a.” indicates that the data are not available.
6. An “x” indicates that the data must remain confidential.
7. An asterisk (*) indicates that the program is taught in English.
8. In this sector, the percentage of employed graduates increased significantly between March 31, 2009 and June 1, 2009. Graduates included in the “studying” category on March 31, 2009 are not taken into consideration.

www.mels.gouv.qc.ca/Relance